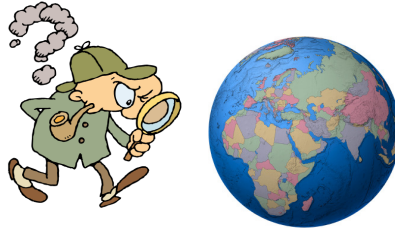


Google Earth Search 3 - Table Format



- 1) Windmills at Kinderdijk
- 2) Space Mountain (Disney World)
- 3) Cinderella's Castle (Disney World)
- 4) Randy's Donuts
- 5) The Lincoln Memorial
- 6) Hoover Dam

- 7) The Great Sphinx
- 8) The Statue of Liberty
- 9) Battleship Massachusetts
- 10) USS Intrepid (Aircraft Carrier)
- 11) The Space Needle
- 12) Splash Mountain

DIRECTIONS

- 1) Make a two column/fourteen row table using Microsoft Word.
- 2) Individually merge each of the top two rows.
- 3) The top row should contain your name, the date, and the class color.
- 4) The second row should be shaded light gray and have "Google Earth 3" typed in the cell.
- 5) Using an internet search engine (such as Google), find the names of the city, state, and country of each of the twelve locations listed above.
- 6) Copy/paste or type each location description and names into each consecutive cell in column one from cell three through cell fourteen.

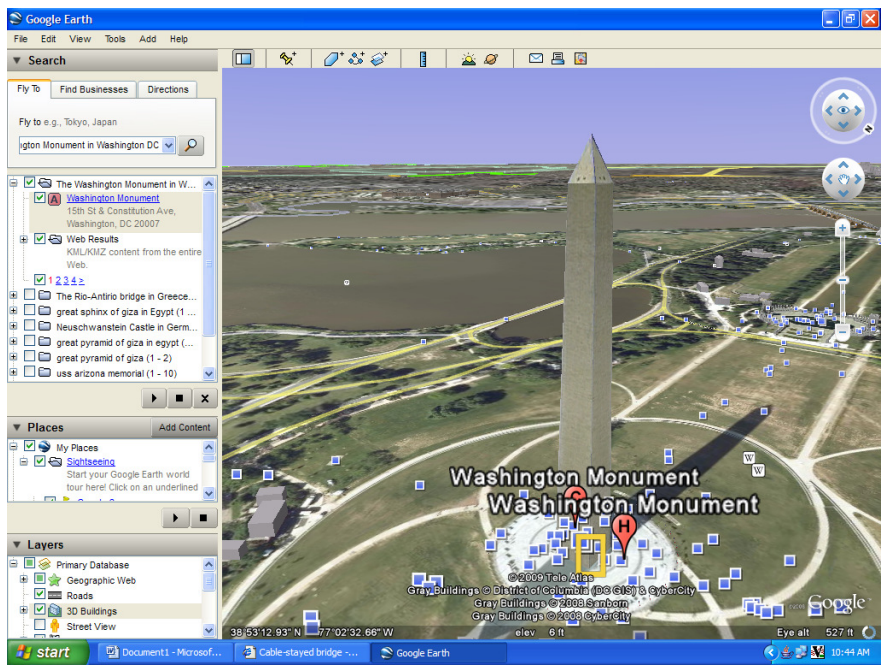
For example: McCourt Middle School Cumberland, Rhode Island USA

- 7) After all of the above locations are listed in your table, open Google Earth in order to find a satellite aerial view of each location.
- 8) Make sure that you are able to view the left sidebar and that the "Fly To" tab is selected.
- 9) From your table, copy and paste each location (one at a time) into the Google Earth "Fly To" Search Bar, and then left-click on the "Begin Search" button (which looks like a magnifying glass).
- 10) Once you find each location, zoom in for the largest, best view of the entire location (without cutting it off) and then use the "Print Screen" button in order to copy the screen image.
- 11) Next, paste the image of the location in the right column next to the appropriate location name in your table.
- 12) The table should look like the one on the next page of these instructions.
- 13) When finished, the table should have a complex border.

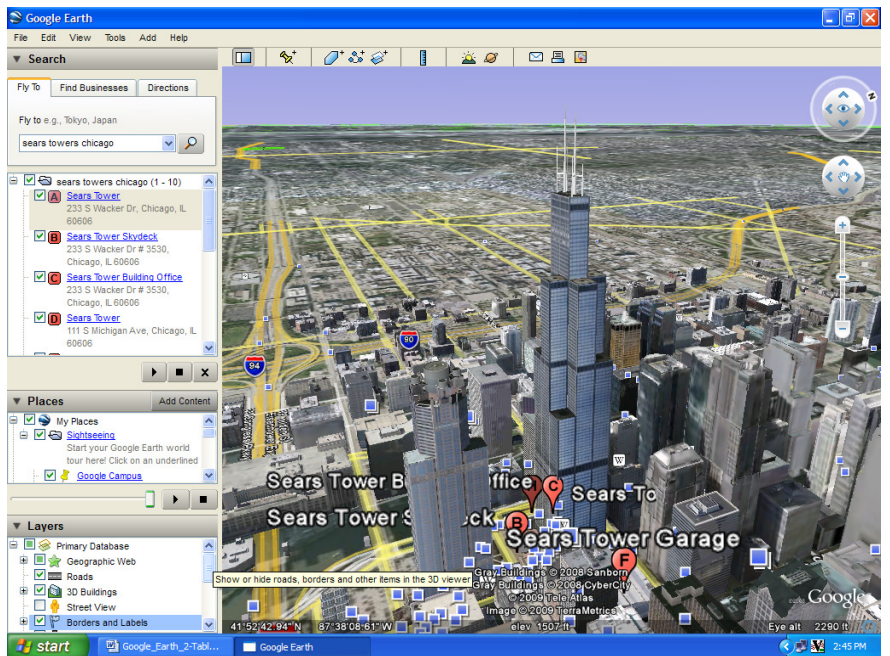
PLEASE NOTE: See the next page for an example of how your Google Earth Search Table should look. This example contains only two locations which are completed, while your table will have twelve locations which need to be completed.

Name, Date, Class Color

The Washington Monument
in Washington DC



The Sears Tower in
Chicago, IL



How to use the three button mouse with Google Earth:

Hold down the left button for panning left-right and up-down



To zoom in, roll the wheel towards you

To zoom out, roll the wheel forward

In order to copy the Google Earth location image, press the "Print Screen" button in the upper right-hand corner of your keyboard. This copies the image, and then you simply paste it into your Word document table.

